



ASSA ABLOY

# Panic Exit Device Range



# Contents

<b>Product Range Specification</b>	<b>3</b>
Description	
Applications	
Features and Specifications	
Materials	
Finishes	
Standards	
Keying	
Specification Service	
<b>Safety &amp; Security</b>	<b>4</b>
<b>Rim latch &amp; Vertical Type Panic Exit Device Series</b>	<b>5</b>
Features and Specifications	
Fire Rating	
Product Article Numbers	
<b>Accessories</b>	<b>6</b>
Outside Access Device	
Single Cylinder	
<b>Typical Door Installation</b>	<b>7</b>
Single Door	
Double Door - Plain Style	
Double Door - Rebated	
<b>Technical Drawings</b>	<b>7</b>
Vertical Rod Type Panic Exit Device	
Rim Latch Type Panic Exit Device	
Outside Access Device	

## Panic Exit Device Specifications

### Description

The Lockwood Panic Exit Devices are available in a range of functions and features. The mechanism for the panic exit device has been designed to ensure easy installation, clean styling and ease of operation. This product offering is suitable for single or double doors.

### Applications

It is important that the width of the passage of the door is not unduly reduced by the projection of the operating bar. This is why the standards set the projection at 100mm (EN1125:1997). The Lockwood Panic Exit Devices are suitable for single or double doors, timber, metal, narrow profile and fire doors.

### Features & Specifications

Deadlatching on central main latch bolts. Safety clutch outside lever trim plate protects the unit from damage that could render the device inoperable.

Surface mounted for ease of installation.

### Handing

All functions are reversible and non-handed.

### Materials

- The body is manufactured of steel.
- Internal mechanisms made of steel. Main and Secondary cover made of decorated Zamak.
- Horizontal bar made of decorated steel.
- Lever plate operating mechanism is made from electroplated steel pressings with high density zinc alloy cover.

### Latchbolt

Made of double Nickel plated steel.

### Auxiliary Latch

Made of double Nickel plated steel.

### Outside Trims

Key entry with key / lever entry mechanism safety override (refer details page 6)

### Door Thickness

Standard 35 to 45mm doors.

### Product Width

Standard maximum 838mm to suit (900mm) door. 1141 to suit (1200mm) door.

### Door Height

Standard maximum height 2300mm (vertical rod version).

Installed with centre line of exit device at 1023mm above finished floor level.

### Door stile

Suitable for both 90° and flush head door stiles minimum head clearance requirement of 30mm.

### Standard Finishes

- Body Sliver Powdercoat
- Touchbar Sliver Powdercoat
- Vertical Rods Sliver Powdercoat

### Standards

The Lockwood Series Panic Exit Devices meet or surpass the following standards.

### EUROPEAN STANDARD

CE marking according EN1125:1997

### FIRE RATED

These products have been successfully certified on fire door assemblies in accordance with EN1634-1.

### Keying

All Lockwood Series Panic Exit Devices can be used in conjunction with Lockwood Master Keying Systems, standard C4 Keyed Alike or Keyed to Differ

### Specification Service

For hardware specification assistance, refer to your local Lockwood Sales Office or Authorised Agent. A comprehensive obligation free door hardware specification can be prepared by our hardware representatives.

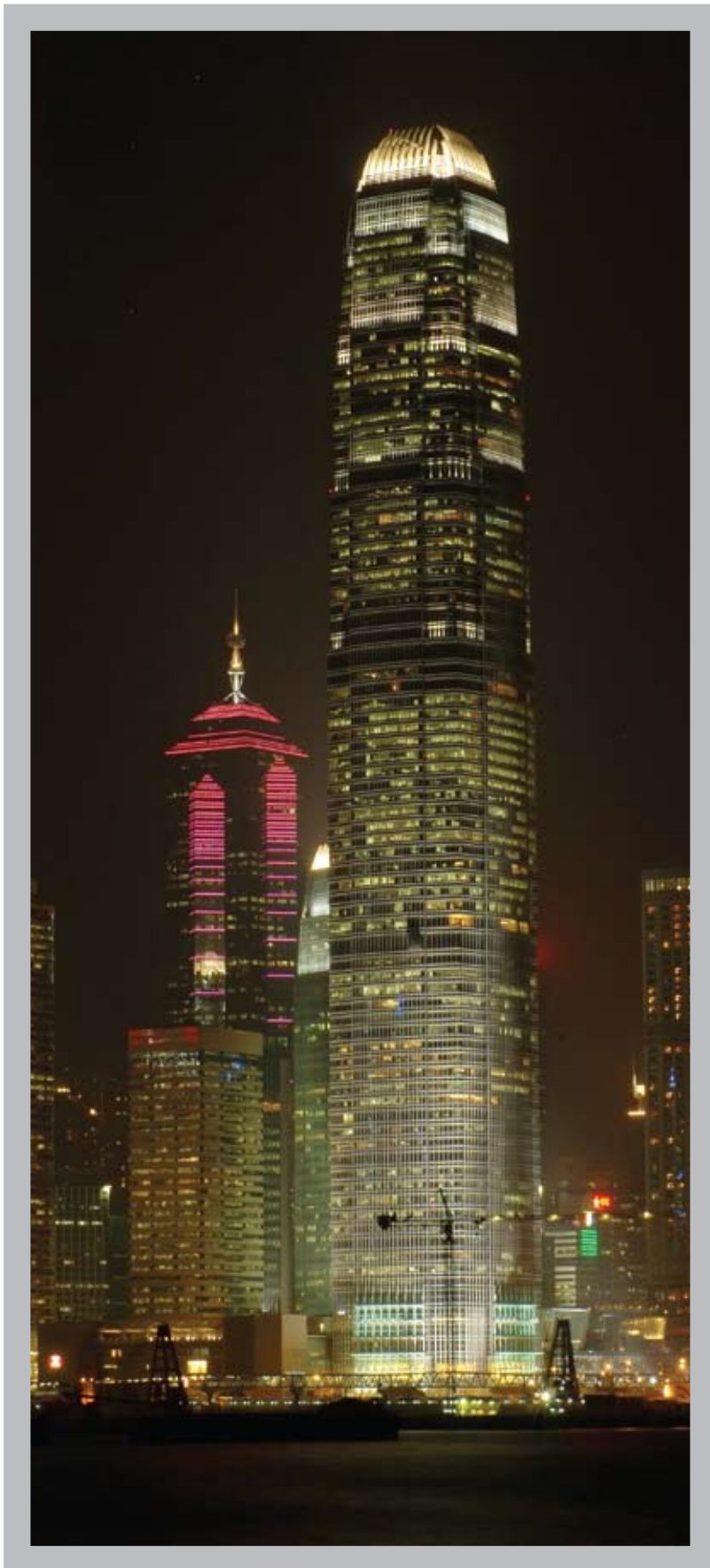


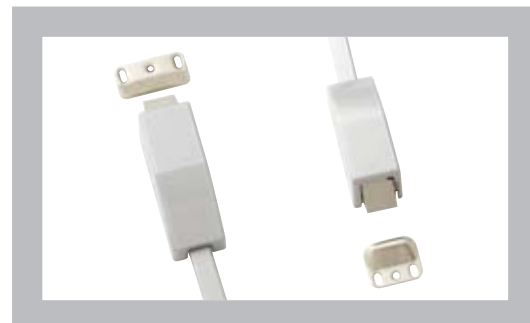
## Safety & Security

The main purpose of a panic exit device is to give safe and effective escape through a doorway with minimum effort and without prior knowledge of the device. In a panic situation, a group of people will react differently from an individual. When two or more people are running to an escape door, probably in darkness and/or smoke, it is possible that the first one to reach the door will not necessarily operate the panic device, but can push the surface of the door while other people will be trying to operate the panic bar by hand or body pressure.

The Lockwood Panic Exit Devices will enable a door to be opened at all times by hand or body pressure along the inside face of the panic device and not require the use of a key or any other object.

All Lockwood Panic Exit Devices are designed for ease of opening by the young, elderly and handicapped and are designed to comply with world class standards for both safety and fire and ensure that they provide a ready means of escape at all times while still maintaining a high level of security.





## Rim Latch and Vertical Rod Type Panic Exit Device

### Features & Specifications (Vertical Rod Device)

Suitable for single and double doors up to 1200mm wide doors and up to 2300mm in height.

Slim, neat design, surface mounted, automatic top and bottom latches maintaining the bolt is withdrawn when the door is open, pick resistant bottom latch.

### Features & Specifications (Rim Device)

The Lockwood Rim Latch Type Panic Exit Device is designed to provide a ready means of escape at all times by the single action of pushing on a horizontal bar fitted across the full width of a door.

Other features include:

- Suitable for single and double door applications up to 1200 mm width doors.
- Slim, neat design, surface mounted.
- External Cylinder and Lever option available.

\* Pack includes standard and flush head top strike. External Cylinder and Lever option available.

### Door Suitability

The Lockwood Rim Latch Type and Vertical Rod Panic Exit Devices are suitable for timber, metal and aluminium doors with mid rail.

### Fire Rating

The Lockwood Rim Latch Type and Vertical Rod Panic Exit Devices have been successfully tested on fire door assemblies in accordance with EN1634-1

### CE Certified

The Lockwood Rim Latch Type and Vertical Rod Panic Exit Devices are CE certified to BS EN 1125

### Finish

Silver Polyester Powdercoat (SIL)

### Part Numbers

Model No:	Article No:	Product Description
PE-RM-01	166550-00001-689	Lockwood Rim latch Type Panic Exit Device
PE-VR-01	166550-00101-689	Lockwood Vertical Rod Type Panic Exit Device



ASSA ABLOY

# Panic Exit Devices Range



## Exit Device Accessories

### Outside Access Device

The Lockwood outside Access Device (Lever and Cylinder) is able to be used on both the Lockwood Rim Latch and Vertical Rod Panic Exit Devices.

The Lockwood Outside Access Device has a built in safety clutch in the outside lever trim plate which protects the unit from damage that could otherwise render the device inoperable.

*\*(Cylinder Ordered Separately)*

### Finish

Silver Powdercoat (SIL)

### Part Numbers

Model No:	Article No:	Product Description
PE-ACC-01	166550-00301-689	Lockwood Panic Exit Device Outside Access Device (Lever and Cylinder)



### Single Cylinder

Single Cylinder, C4 key profile, fixed cam, 45mm length.

### Finish

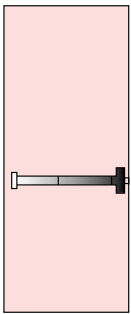
Satin Chrome (SC)

### Part Numbers

Model No:	Article No:	Product Description
C/45	165030-00045-626	Lockwood 5 Pin Single Cylinder C4 Key Profile – 45mm Length

## Typical Door Installations

### Single Doors

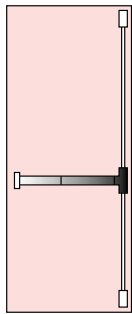


Single Door with Rim Device

**Model No:**  
PE-RM-01

**Article Number:**  
166550-00001-689

**Product Description:**  
Lockwood Rim latch Type  
Panic Exit Device



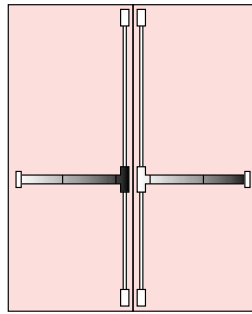
Single Door with Vertical Device

**Model No:**  
PE-VR-01

**Article Number:**  
166550-00101-689

**Product Description:**  
Lockwood Vertical Rod Type  
Panic Exit Device

### Double Doors



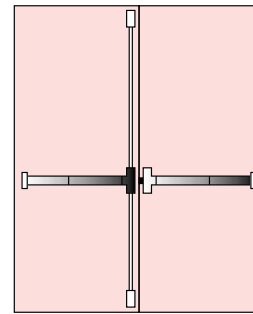
Pair of non-rebated Doors  
with 2 vertical Devices

**Model No:**  
PE-VR-01

**Article Number:**  
166550-00101-689

**Product Description:**  
Lockwood Vertical Rod Type  
Panic Exit Device.

*\* Two Exit Devices are required*



Pair of rebated Doors – 1 Vertical Device,  
1 Rim Device and 1 Double Door Strike

**Model No:**  
PE-RM-01

**Article Number:**  
166550-00001-689

**Product Description:**  
Lockwood Rim latch Type  
Panic Exit Device

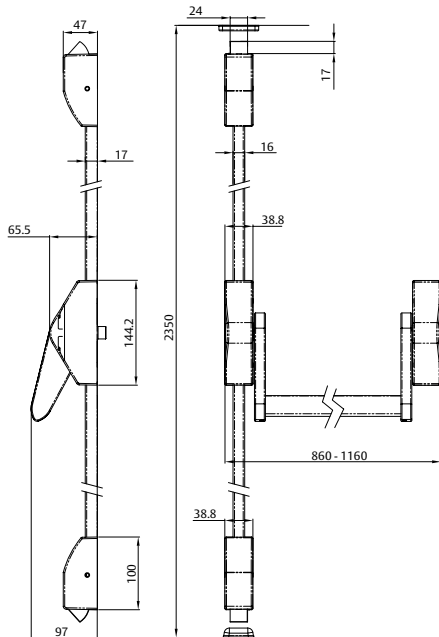
**Model No:**  
PE-VR-01

**Article Number:**  
166550-00101-689

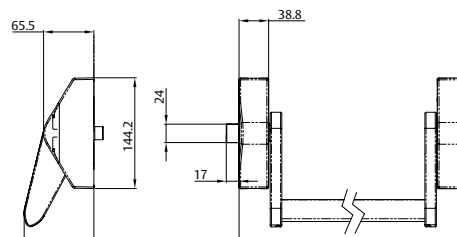
**Product Description:**  
Lockwood Vertical Rod Type  
Panic Exit Device

## Technical Drawings

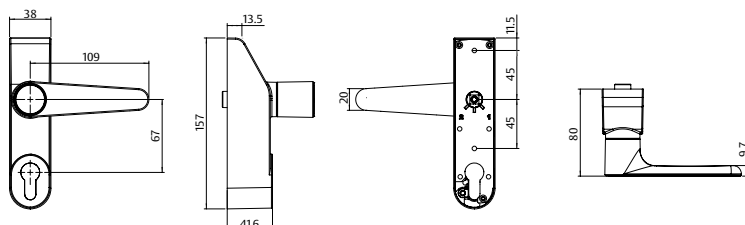
### Vertical Rod Device



### Rim Device



### Outside Access Device





**ASSA ABLOY**

ASSA ABLOY is the global leader in door opening solutions, dedicated to satisfying end-user needs for security, safety and convenience.

[lockwoodasia.com](http://lockwoodasia.com)

---

**ASSA ABLOY Singapore**

152 Ubi Avenue 4,  
03-02 Armorcoat  
Technologies Building,  
Singapore 408826

Telephone +65 6880 0000  
Facsimile +65 6880 0500

---

**ASSA ABLOY Philippines**

15/F Unit 1505  
World Trade Exchange Building  
215 Juan Luna Street  
Binondo, Manila,  
Philippines 1006

Telephone +632 2442 890  
Facsimile +632 2442 889

---

**ASSA ABLOY Thailand**

5th Floor, 1919  
Preecha Group Building,  
Pattanakarn Road,  
Suanluang, Suanluang,  
Bangkok 10250,  
Thailand

Telephone +66 2 722 7371  
Facsimile +66 2 7227375

---

**Middle East**

P.O Box 283280,  
Dubai  
United Arab Emirates

Telephone +971 (0) 50 714 0751  
Facsimile +971 (0) 4 421 7349

---

**ASSA ABLOY Malaysia**

No. 14 Jalan Wan Kadir 1,  
Taman Tun Dr.  
Ismail, 60000  
Kuala Lumpur,  
Malaysia

Telephone +60 3 7725 3888  
Facsimile +60 3 7725 8333

---

**Export Enquiries**

ASSA ABLOY Australia  
Export Department  
235 Huntingdale Road  
Oakleigh, Victoria, 3166  
Australia

Telephone +61 3 8574 3888  
Facsimilie +61 3 8574 3788

---

**ASSA ABLOY India**

B-206, 2nd Floor  
Universal Business Park  
Off Saki Vihar Road  
Kamani Oil Mills Road  
Andheri (East) Mumbai  
India 400072

Telephone +91 22 40051380  
Facsimile +91 22 40051383